



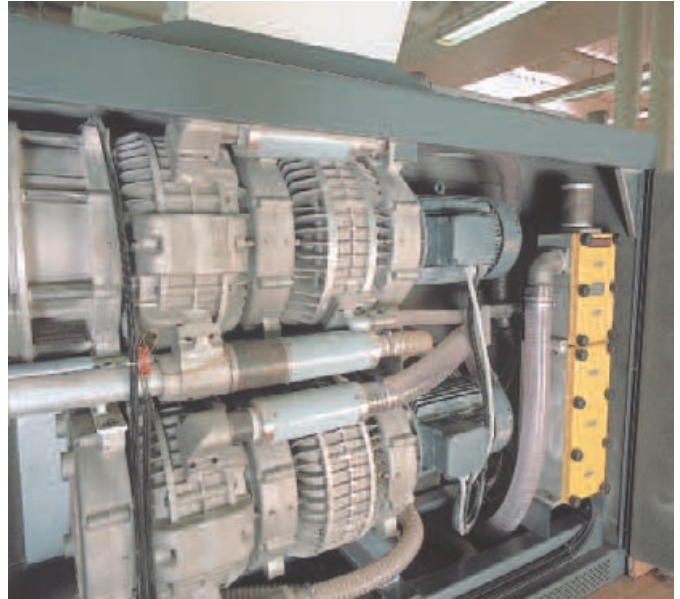
MANN+HUMMEL Inline Piclon
Two-stage plastic air cleaner with inline air flow

Inline Piclon: Two-stage air cleaner with plastic housing

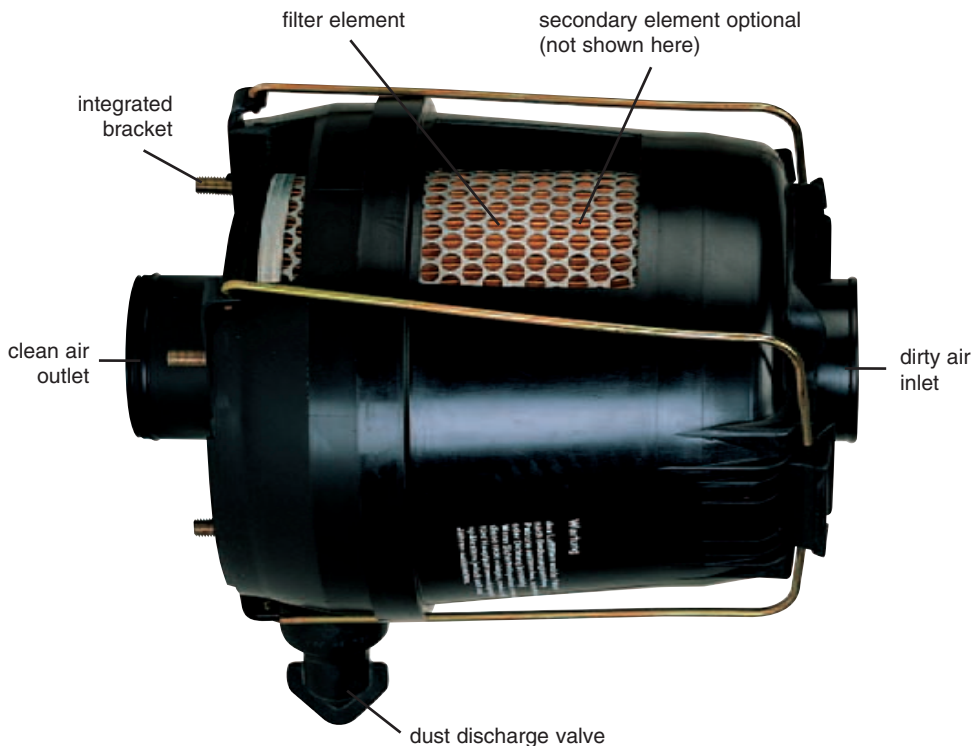
This two-stage air cleaner from MANN+HUMMEL with integrated pre-separation is available in three sizes. The Inline Piclon is particularly suited for use in medium dust conditions and for use with engines and compressors with pulsating intake air.

Advantages at a glance:

- linear air flow
- compact design
- economical air cleaner system with integrated bracket
- easy element change without tools
- corrosion-free and robust housing through use of recyclable plastic
- threaded inserts integrated in housing enable quick first-fit on vehicle



Sectional view



Filter configuration and installation

The Inline Piclon consists of a plastic housing which is closed on the outside by two wire clamps. Four screws located on the bottom allow the air cleaner to be mounted in a vertical, hanging or horizontal position. If the air cleaner is mounted in a vertical position, a secondary element must be installed. Dust discharge is made via a valve. A separate bracket is not necessary.

Filter elements



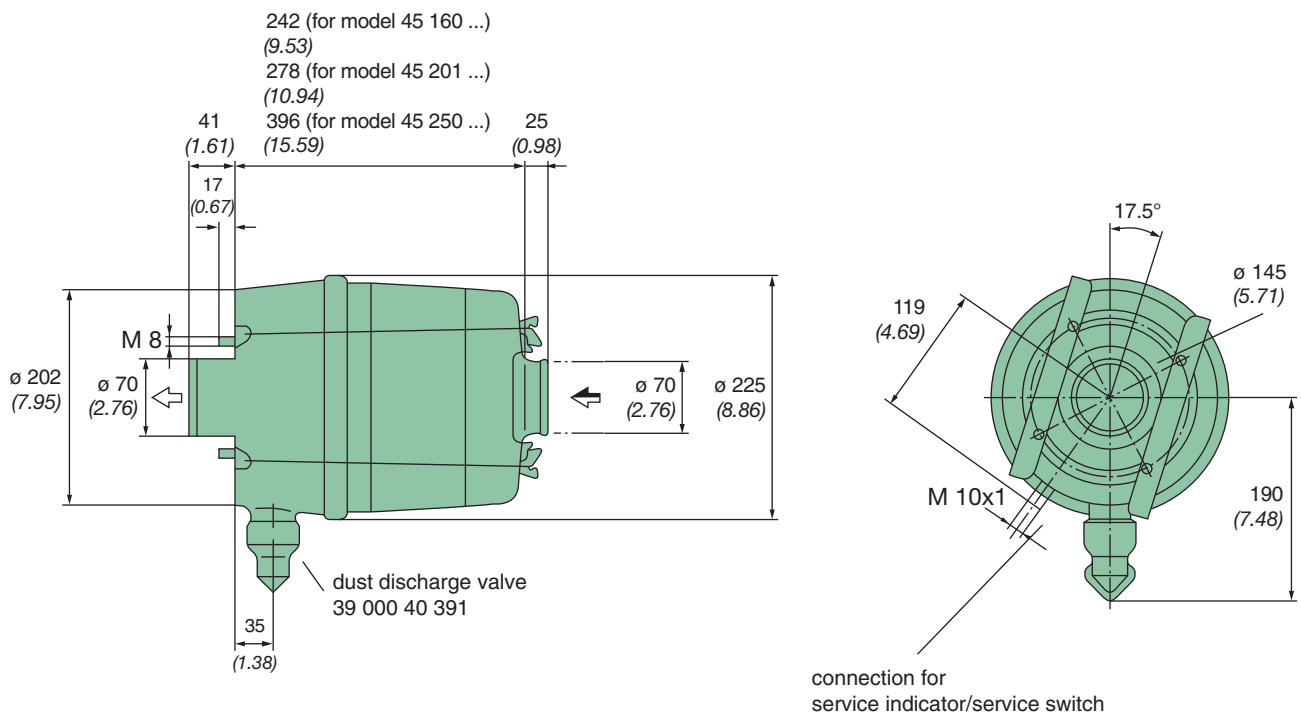
Filter element

- high dust capacity through special MANN+HUMMEL filter medium
- reliable pleat stabilisation prevents pleats sticking together in unfavourable conditions
- two closing clamps on the outside of the housing ensure that the filter element is securely fitted in the housing

Secondary element

- MANN+HUMMEL synthetic fabric for a high safety margin with low pressure drop
- secure fitting in the housing through a tie-rod and a fastening nut prevent an unintentional removal of the secondary element

Dimensions and part numbers



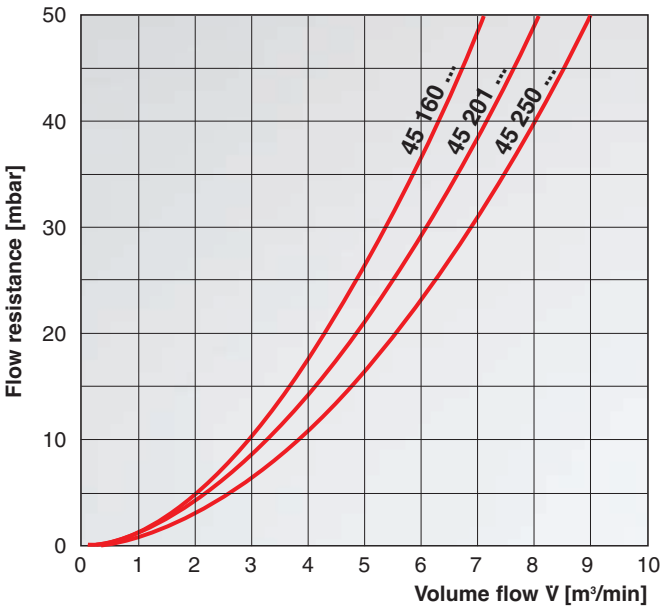
Part No.		Nominal flow rate [m³/min]	Replacement filter element		Approx. weight [kg]
without secondary element	with secondary element		MANN-FILTER main element	MANN-Filter secondary element	
45 160 92 901	45 160 92 951	5.3	C 17 160	CF 820	2.5
45 201 92 904	45 201 92 951	6.0	C 17 201	CF 820	2.7
45 250 92 905	45 250 92 906	6.7	C 17 250	CF 830	3.4

Inline Piclon

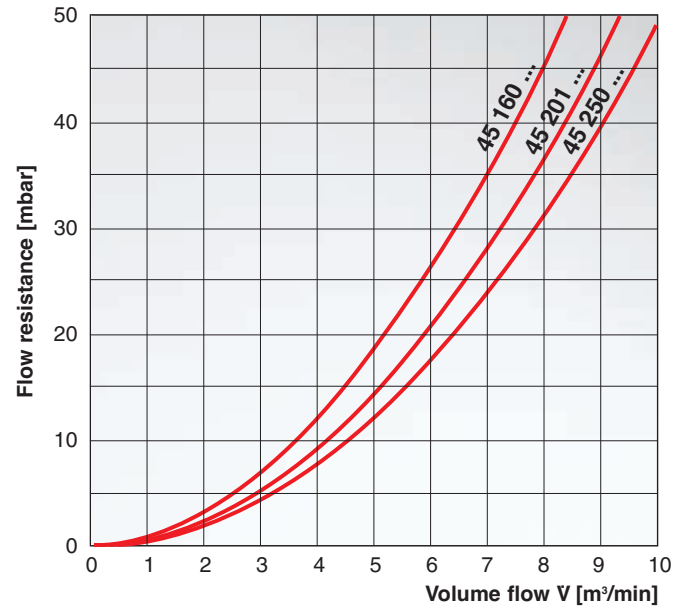
Flow characteristics ...



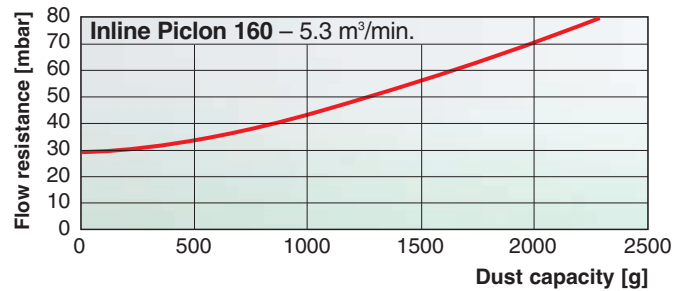
... with secondary element ...
... for flow rates as per ISO 5011



... without secondary element ...
... for flow rates as per ISO 5011



... for dust capacity with secondary element
as per ISO 5011 with SAE coarse test dust



... for dust capacity without secondary element
as per ISO 5011 with SAE coarse test dust

