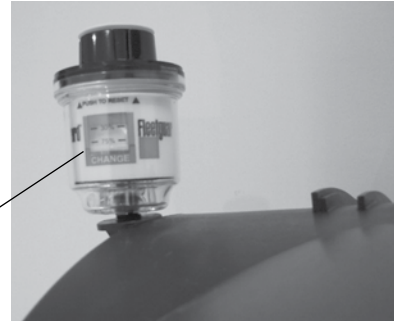




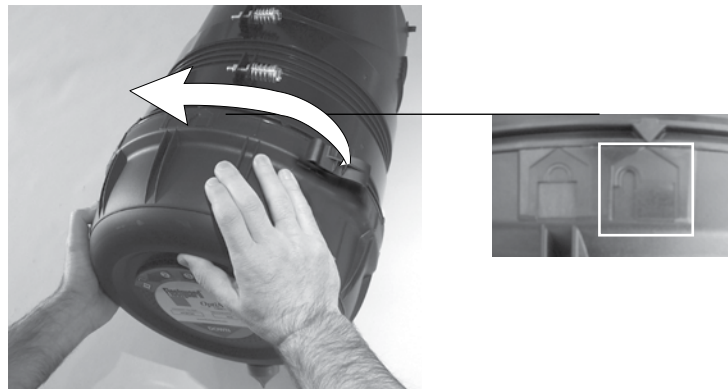
**1 Time for an element change...**  
The restriction indicator mounted on your OptiAir™ system indicates when your OptiAir element needs changing.



**2** Lift the lever as indicated on the OptiAir cover label.



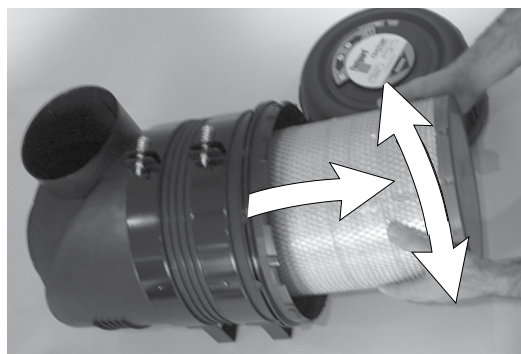
**3** Twist the OptiAir cover to the left into the "open" position.



**4** Remove the OptiAir cover.



**5** Twist the end of the filter to disengage seal. Gently remove the filter element<sup>1</sup> from the housing. Inspect the filter for foreign material on the sealing surface and potential marks of dust on the clean air side.



<sup>1</sup> If servicing a system that contains a secondary element that needs to be replaced, apply the same procedure as shown in step 5.

**6** Thoroughly clean the sealing surface and the inside of the OptiAir™ housing.



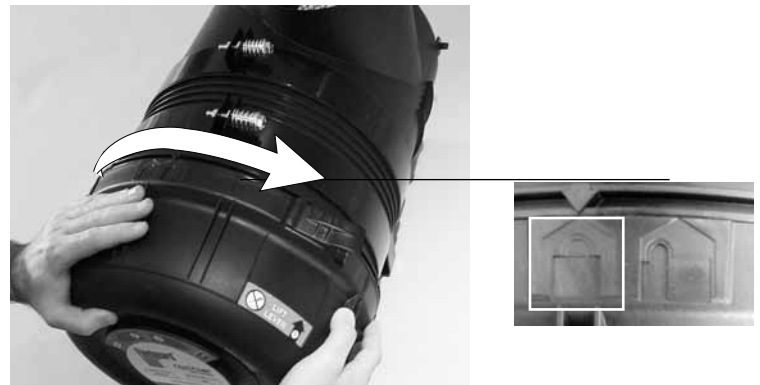
**7** Inspect the new filter element<sup>2</sup> for damage and insert into the housing.



**8** Place the OptiAir cover back on the housing. Make sure dust ejection valve is orientated downward.



**9** Twist the OptiAir cover to the right into the "locked" position



**10** Reset the restriction indicator.



<sup>2</sup> If servicing a system that contains a secondary element that needs to be replaced, apply the same procedure as shown in step 7.

