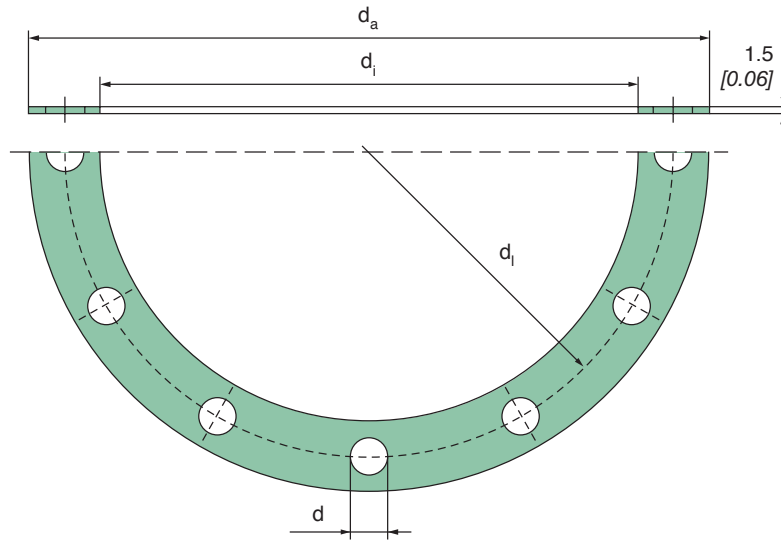




## **Accessories for MANN+HUMMEL Air/oil separators**

# Seals for MANN+HUMMEL Air/oil separators



Order No.	Diameter Air/oil separator [mm] [inches]	$d_a$ [mm] [inches]	$d_i$ [mm] [inches]	$d_i$ [mm] [inches]	$d$ [mm] [inches] x Number of holes
23 074 31 212	73 [2.87]	111 [4.37]	73.5 [2.89]	-	-
23 113 31 141	110 [4.33]	154 [6.06]	113 [4.45]	-	-
23 114 31 991	110 [4.33]	165 [6.50]	113.5 [4.47]	-	-
23 128 31 101	125 [4.92]	165 [6.50]	128 [5.04]	-	-
23 134 31 101	135 [5.31]	155 [6.10]	135 [5.13]	-	-
23 138 31 134	135 [5.31]	178 [7.01]	138 [5.43]	-	-
23 138 31 981	135 [5.31]	165 [6.50]	138 [5.43]	-	-
23 138 31 141	135 [5.31]	215 [8.46]	138 [5.43]	-	-
23 138 31 971	135 [5.31]	215 [8.46]	138 [5.43]	-	-
23 138 31 961	135 [5.31]	178 [7.01]	138 [5.43]	-	-
23 138 31 171	135 [5.31]	190 [7.48]	138 [5.43]	-	-
23 172 31 123	170 [6.69]	238 [9.37]	172 [6.77]	-	-
23 172 31 124	170 [6.69]	195 [7.68]	172 [6.77]	-	-
23 172 31 131	170 [6.69]	245 [9.65]	172 [6.77]	210 [8.27]	17 [0.67] x 8
23 172 31 141	170 [6.69]	192 [7.56]	172 [6.77]	-	-

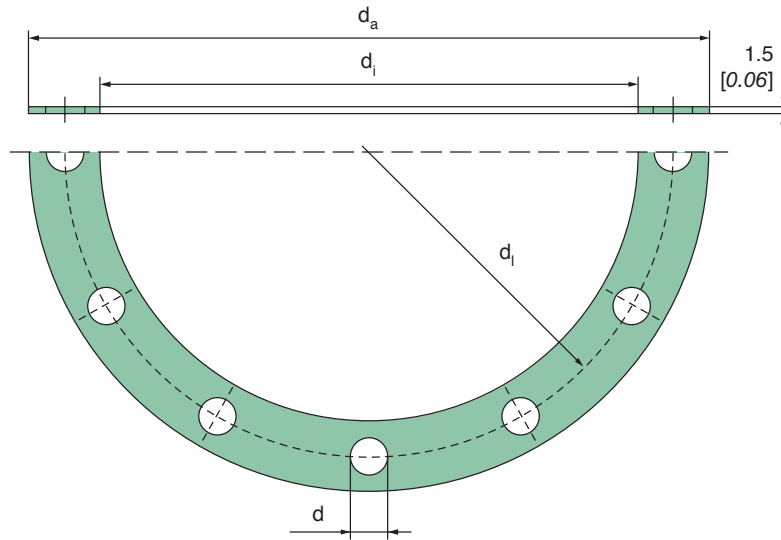
The listed seals have a thickness of 1.5 mm (0.06 inches).

# Seals for MANN+HUMMEL Air/oil separators

Order No.	Diameter Air/oil separator [mm] [inches]	d <sub>a</sub> [mm] [inches]	d <sub>i</sub> [mm] [inches]	d <sub>i</sub> [mm] [inches]	d [mm] [inches] x Number of holes
23 172 31 151	170 [6.69]	238 [9.37]	172 [6.77]	215 [8.46]	14 [0.55] x 8
23 172 31 951	170 [6.69]	200 [7.87]	172 [6.77]	–	–
23 172 31 171	170 [6.69]	220 [8.66]	172 [6.77]	–	–
23 17 231 941	170 [6.69]	245 [9.65]	172 [6.77]	210 [8.27]	13 [0.51] x 8
23 19 031 121	170 [6.69]	240 [9.45]	190 [7.48]	215 [8.46]	14 [0.55] x 12
23 203 31 101	200 [7.87]	240 [9.45]	203 [7.99]	–	–
23 223 31 105	220 [8.66]	238 [9.37]	223 [8.78]	–	–
23 223 31 106	220 [8.66]	290 [11.42]	223 [8.78]	–	–
23 223 31 131	220 [8.66]	284 [11.18]	223 [8.78]	–	–
23 223 31 107	220 [8.66]	274 [10.79]	223 [8.78]	–	–
23 223 31 111	220 [8.66]	265 [10.43]	223 [8.78]	–	–
23 223 31 121	220 [8.66]	250 [9.84]	223 [8.78]	–	–
23 230 31 121	170/220 [6.69/8.66]	295 [11.61]	230 [9.06]	265 [10.43]	13 [0.51] x 8
23 230 31 131	220 [8.66]	300 [11.81]	230 [9.06]	272 [10.71]	14 [0.55] x 12
23 278 31 103	275 [10.83]	296 [11.65]	278 [10.94]	–	–
23 278 31 104	275 [10.83]	328 [12.91]	278 [10.94]	–	–
23 278 31 111	275 [10.83]	375 [14.76]	278 [10.94]	–	–
23 278 31 991	275 [10.83]	296 [11.65]	278 [10.94]	–	–
23 300 31 101	300 [11.81]	348 [13.70]	300 [11.81]	–	–
23 303 31 112	300 [11.81]	355 [13.98]	303 [11.93]	–	–
23 303 31 122	300 [11.81]	440 [17.32]	303 [11.93]	–	–
23 303 311 31	300 [11.81]	343 [13.50]	303 [11.93]	–	–
23 303 319 81	300 [11.81]	440 [17.32]	303 [11.93]	–	–
23 303 311 51	300 [11.81]	400 [15.75]	303 [11.93]	350 [13.78]	26 [1.02] x 12
23 303 311 61	300 [11.81]	350 [13.78]	303 [11.93]	–	–

The listed seals have a thickness of 1.5 mm (0.06 inches).

# Seals for MANN+HUMMEL Air/oil separators



Order No.	Diameter Air/oil separator [mm] [inches]	$d_a$ [mm] [inches]	$d_i$ [mm] [inches]	$d_i$ [mm] [inches]	$d$ [mm] [inches] x Number of holes
23 303 311 71	300 [11.81]	390 [15.35]	303 [11.93]	—	—
23 303 311 91	300 [11.81]	328 [12.91]	303 [11.93]	—	—
23 320 311 31	300 [11.81]	360 [14.17]	320 [12.60]	—	—
23 353 311 01	350 [13.78]	430 [16.93]	353 [13.90]	—	—
23 353 319 81	350 [13.78]	430 [16.93]	353 [13.90]	—	—
23 353 311 21	350 [13.78]	395 [15.55]	353 [13.90]	—	—
23 403 311 01	400 [15.75]	434 [17.09]	403 [15.87]	—	—
23 403 311 21	400 [15.75]	500 [19.69]	403 [15.87]	460 [18.11]	18 [0.71] x 16
23 403 311 31	400 [15.75]	440 [17.32]	403 [15.87]	—	—
23 479 311 11	475 [18.70]	535 [21.06]	479 [18.86]	—	—
23 479 311 21	475 [18.70]	635 [25.00]	479 [18.86]	—	—
23 630 311 01	475 [18.70]	740 [29.13]	630 [24.80]	686 [27.01]	28 [1.10] x 24
23 600 311 02	595 [23.43]	700 [27.56]	600 [23.62]	660 [25.98]	23 [0.91] x 24

The listed seals have a thickness of 1.5 mm (0.06 inches).

# Filter heads for MANN+HUMMEL Air/oil separators

These filter heads are available individually and are pressure-tested.

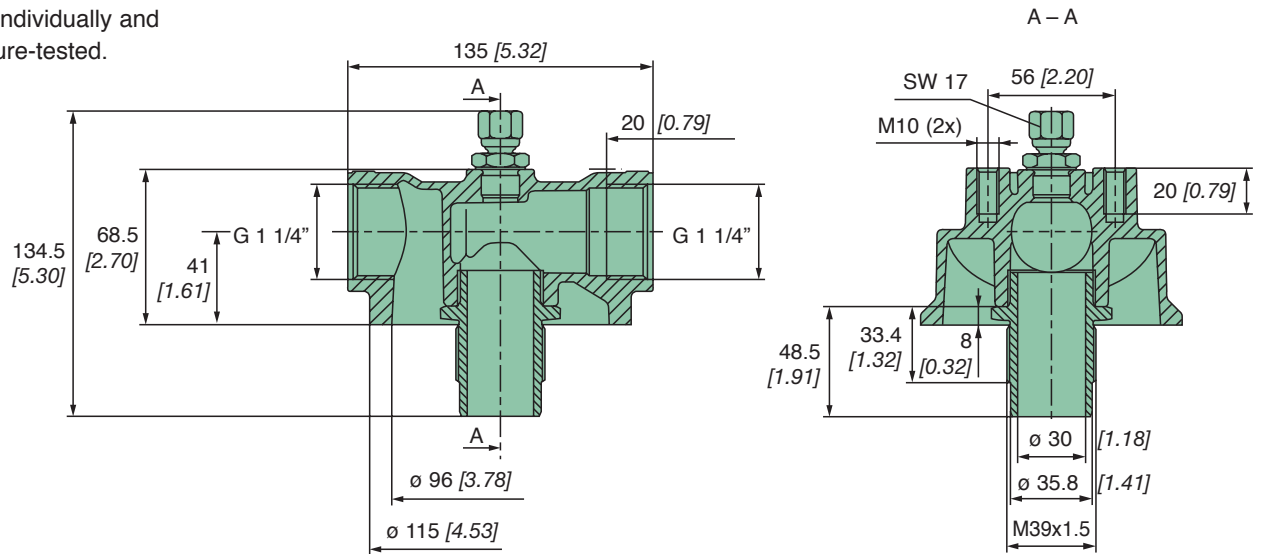


Fig. 1

Order No.	Fig.	Suitable air/oil separator box	max. working pressure [bar]	max. working pressure [MPa]
67 700 31 801	1	1x LB 1374/2; 1x LB 13 145/3; 1x LB 13 145/20	20	2.0
67 730 31 861	2	2x LB 1374/2; 2x LB 13 145/3; 2x LB 13 145/20	20	2.0
67 750 31 971	3	3x LB 1374/2; 3x LB 13 145/3; 3x LB 13 145/20	20	2.0

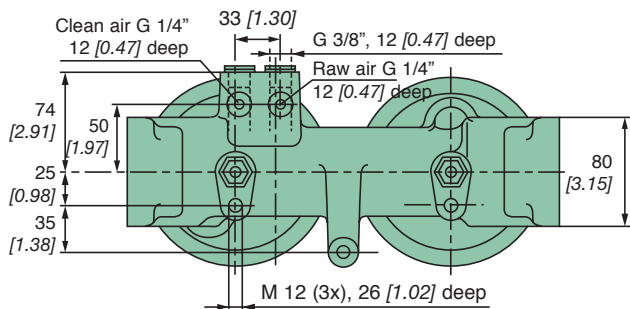
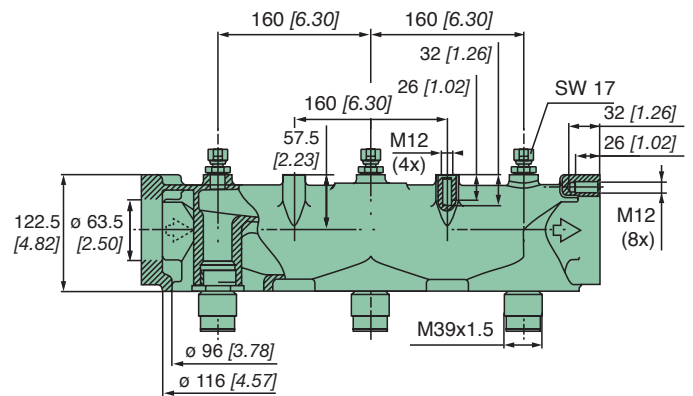
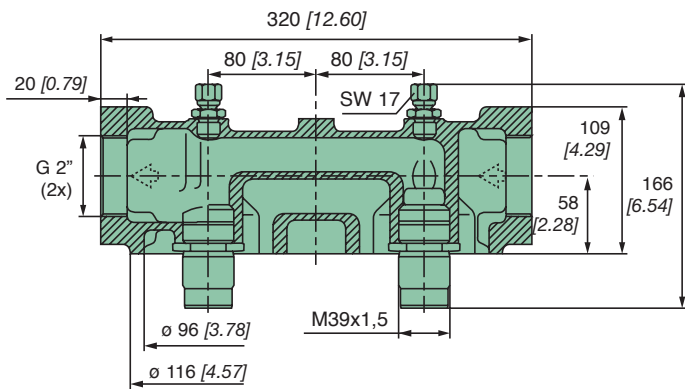


Fig. 2

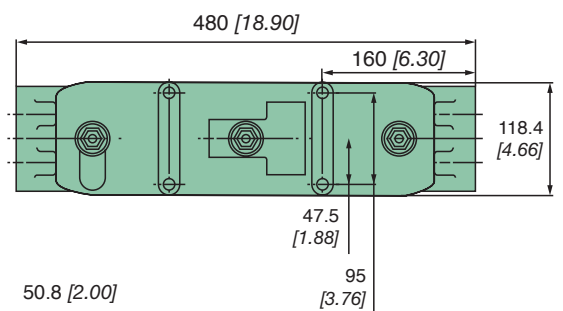
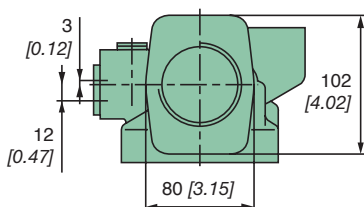
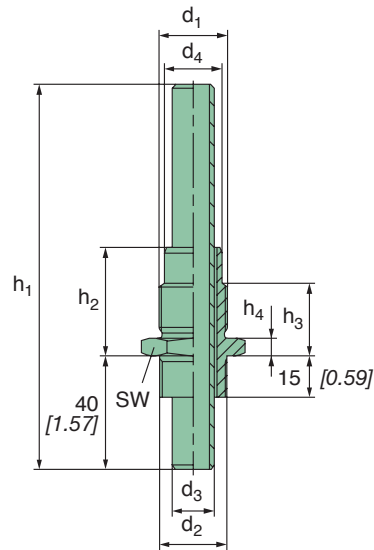


Fig. 3



# Screw-on connectors for MANN+HUMMEL Air/oil separators



Order No.	Suitable air/oil separator box	Dimensions in mm [ <i>dimensions in inches</i> ]								
		d <sub>1</sub>	d <sub>2</sub>	d <sub>3</sub>	d <sub>4</sub>	h <sub>1</sub>	h <sub>2</sub>	h <sub>3</sub>	h <sub>4</sub>	SW
21 024 15 981	LB 719/2	M 22x1.5	M 24x1.5	14 [0.55]	19.2 [0.76]	135 [5.32]	38 [1.50]	25.4 [1.00]	6 [0.24]	27 [1.06]
21 027 15 991	LB 962/2	M 24x1.5	M 27x1.5	15 [0.59]	19.6 [0.78]	135 [5.32]	38 [1.50]	25.4 [1.00]	6 [0.24]	32 [1.26]
21 036 15 991	LB 11 102/2	M 32x1.5	M 36x1.5	22 [0.87]	28.1 [1.11]	155 [6.10]	41.5 [1.63]	27.4 [1.08]	6 [0.24]	41 [1.61]
21 042 15 991	LB 1374/2 LB 13 145/3	M 39x1.5	M 42x1.5	30 [1.18]	35.8 [1.41]	175 [6.89]	41.5 [1.63]	34.4 [1.35]	7 [0.28]	46 [1.81]

1) Flow rate according to DIN 1945 at 7 bar (0.7 MPa) operating pressure.